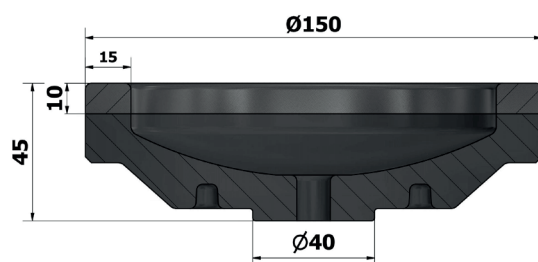


# BR-X TOOLING LINE



Resin bond diamond wheels made of lightweight, durable composite material. Featuring excellent mechanical properties, they deliver maximum energy at the cutting point without vibrations. Available in a wide range of grit sizes to offer the best performance and quality in their category. **BR-X** wheels are suitable for Bavelloni machinery; upon request, they can be provided with specific hub to fit other manufacturers' machines.

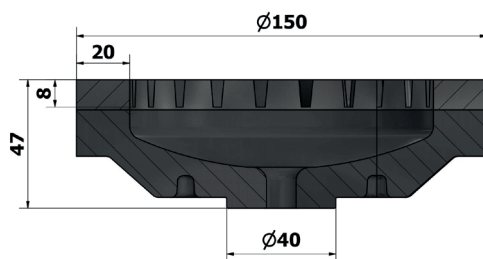
## CONTINUOUS BAND



Part number	Dimensions	Band	Mesh
U29015000112	150x45x11	W15X10	200
U29015000039	150x45x11	W15X10	270
U29015000036	150x45x11	W15X10	700
U29015000037	150x45x11	W15X10	900
U29015000115 *	150x45x11	W15X10	200

\* arrossing wheel

## TURBO-SEGMENT BAND



Part number	Dimensions	Band	Mesh
U29115000027	150x46x11	W20X8	200
U29115000030	150x46x11	W20X8	270
U29115000029	150x46x11	W20X8	500
U29115000028	150x46x11	W20X8	700



NOTE: images shown in this brochure are indicative.  
Items may differ from the pictures shown. Bavelloni reserves the right to alter specifications without prior notice.



[www.bavelloni.com](http://www.bavelloni.com)

The Bavelloni Tools Division is specialized  
in the development and production of  
diamond and polishing tools.  
The widest range of tools.

At your disposal.

 **BAVELLONI  
TOOLS**

Bavelloni SpA  
[info@bavelloni.com](mailto:info@bavelloni.com) - [www.bavelloni.com](http://www.bavelloni.com)